

PARADISE GARDENS



PARADISE GARDENS 5* GOLF & BEACH RESORT, SAHL HASHEESH

Located next to the largest Public Beach in Sahl Haseesh and immediately in front of a superb new golf course Paradise Gardens has stunning Sea, Pool or Golf views from most apartments..

FANTASTIC OPPORTUNITY TO INVEST IN PHASE I-

Phase I prices start from an incredible 975 euros per m²

Studios from 52,553 euro (53.9m²; in B30)

One bed Apartments from 64,350 euro (66m²; in B30)

Two bed Apartments from 79,365 euro (81.4m² in B20-B23)

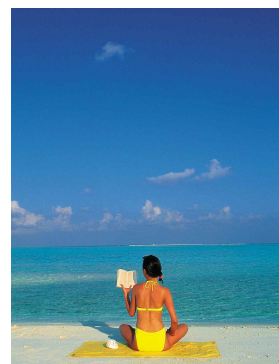
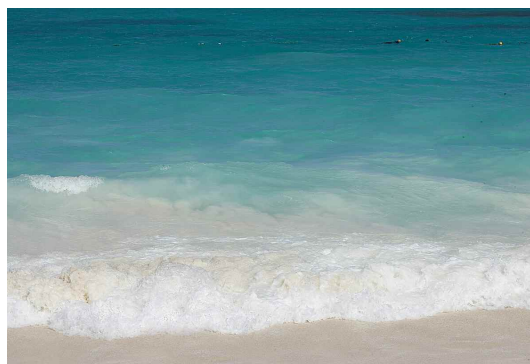
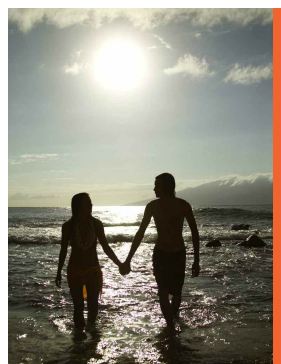
Three bed / 2 bath Apartments from 112,613 euro (115.5m² in B20-B23)

Three bed / 3 bathroom townhouses 194,310 euros (152.4m²)

Four bed townhouses 235,060 euro (184.8m²) . There will be 10 detached Villas available at 40% above the townhouse prices.

These prices will be increased by an average of 10% in April 2008 –

RESERVE NOW – BELOW MARKET PRICES AND LOCK IN A FURTHER 10% GAIN.



PARADISE GARDENS



PARADISE GARDENS



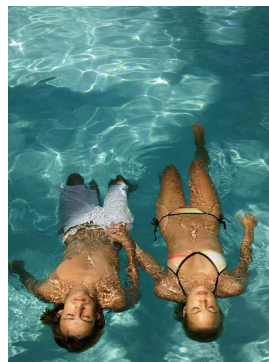
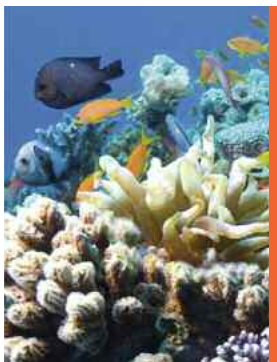
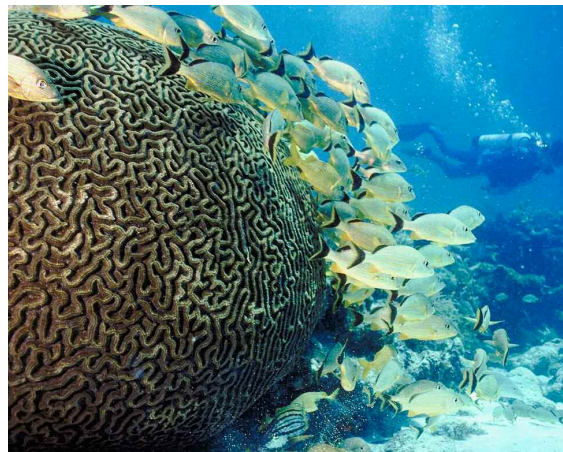
The project is nearly two years off-plan

Payment Schedule:

- 10% reservation fee
- 40% On contract (28 days)
- 50% completion December 2009

Maintenance

20 euro per m² per annum



PARADISE GARDENS



Only 20 townhouses / Villas available.

Call us today for individual floorplans or to reserve a unit.

WHAT ELSE MAKES PARADISE GARDENS THE OBVIOUS CHOICE?

Paradise Gardens is developed by a publicly quoted plc worth 750 million US dollars. This is as safe as it gets in Egypt in terms of your peace of mind regarding your deposit monies.

Paradise Gardens is developed by a company with decades of experience in the Hotel/hospitality market – they have worldwide connections to ensure you maximise your rental income by maximising occupancy throughout the year. There is no other company locally that has this kind of marketing muscle to put your property on the global holiday map.

Paradise Gardens - speaks for itself.

